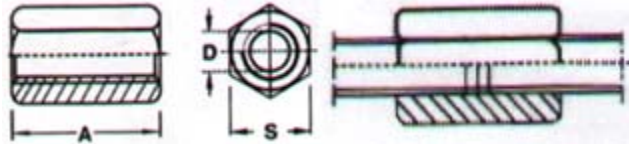


Extension Nut [Product Type: T2-EN]

Material: Heat-Treated Steel; Blackened.

Applications: Used as a coupler to join two studs for increasing clamping height.



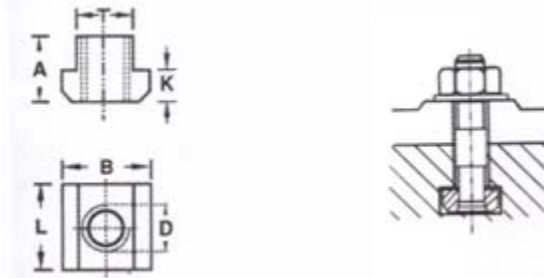
Type	ØD X A	S (mm)
T2-EN-824	M8 X 24	13
T2-EN-1030	M10 X 30	17
T2-EN-1236	M12 X 36	19
T2-EN-1648	M16 X 48	24
T2-EN-2060	M20 X 60	30
T2-EN-2472	M24 X 72	36

T-Nut [Product Type: T2-TN]



Material: Heat-Treated Steel; Blackened.

Applications: For use along with studs for work-holding , fixtures, etc.



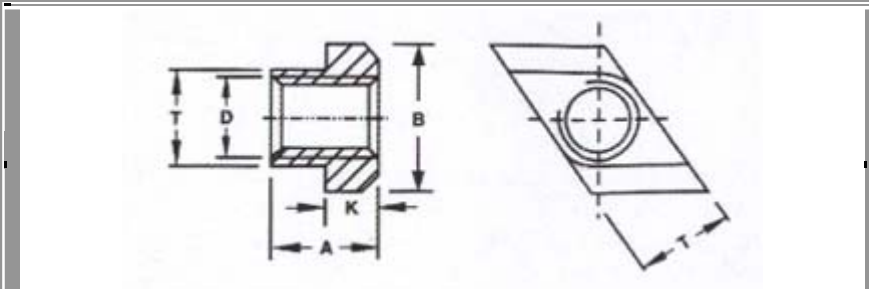
Type	T X ØD	A (mm)	K (mm)	B X L (mm)
T2-TN-86	8 X M6	10	6	13 X 13
T2-TN-108	10 X M8	12	6	15 X 15
T2-TN-1210	12 X M10	14	7	18 X 18
T2-TN-1412	14 X M12	16	8	22 X 22
T2-TN-1612	16 X M12	18	9	25 X 25
T2-TN-1816	18 X M16	20	10	28 X 28
T2-TN-2016	20 X M16	24	12	32 X 32
T2-TN-2018	20 X M18	24	12	32 X 32
T2-TN-2216	22 X M16	28	14	35 X 35
T2-TN-2220	22 X M20	28	14	35 X 35
T2-TN-2420	24 X M20	32	16	40 X 40
T2-TN-2824	28 X M24	36	18	44 X 44
T2-TN-3630	36 X M30	44	22	54 X 54
T2-TN-4236	42 X M36	52	26	65 X 65

Rhombus T-Nut [Product Type: T2-RTN]



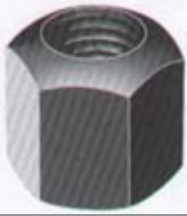
Material: Medium Carbon Steel; Hardened & Tempered to 24-32 HRC, Chemically Blackened.

Applications: For longer T-Slots, introduction of normal T-Nut from ends consumes more time and needs cleaner slots. Rhombus T-Nut can be inserted from top of bed at desired place and then turned to achieve normal T-Nut functions.



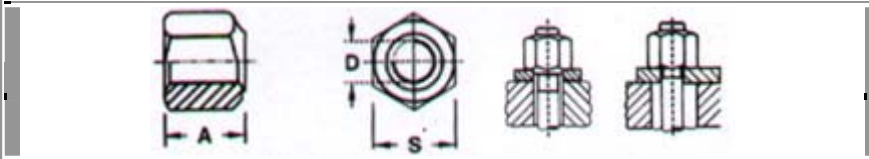
Type	T	ØD	A	K	B
			(mm)	(mm)	(mm)
T2-RTN-1210	12	M10	14	7	18
T2-RTN-1412	14	M12	16	8	22
T2-RTN-1614	16	M14	18	9	25
T2-RTN-1612	16	M12	18	9	25
T2-RTN-1816	18	M16	20	10	28
T2-RTN-2016	20	M16	24	12	32
T2-RTN-2216	22	M16	28	14	35
T2-RTN-2220	22	M20	28	14	35
T2-RTN-2420	24	M20	32	16	40
T2-RTN-2824	28	M24	36	18	44
T2-RTN-3630	36	M30	44	22	54
T2-RTN-4236	42	M36	52	26	65

Hex Nut [Product Type: T2-HN]



Material: Heat-Treated Steel; Blackened.

Applications: Additional thickness covers more thread length effecting better clamping. Flat end used along with plain washer; spherical end used along with conical-seat washer.



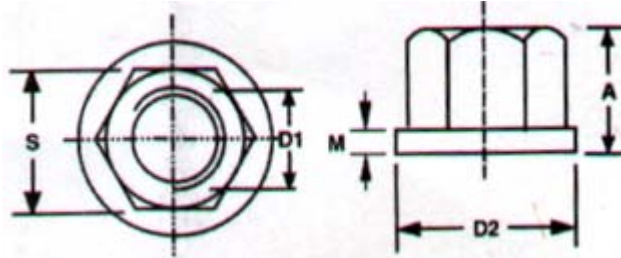
Type	ØD X A	S (mm)
T2-HN-812	M8 X 12	13
T2-HN-1015	M10 X 15	17
T2-HN-1218	M12 X 18	19
T2-HN-1624	M16 X 24	24
T2-HN-2030	M20 X 30	30
T2-HN-2436	M24 X 36	36

Flanged Hex Nut (Collar Nut) [Product Type: T2-FHN]



Material: Medium carbon steel, hardened and tempered to 24-32 HRC hardness, chemically blackened.

Applications: Extra height covers more number of threads effecting better clamping. Built-in washer provides even force distribution.



Type	D1 (mm)	D2 (mm)	M (mm)	A (mm)	S (mm)
T2-FHN-818	M8	18	3.5	12	13
T2-FHN-1022	M10	22	4	15	17
T2-FHN-1225	M12	25	4	18	19
T2-FHN-1631	M16	31	5	24	24
T2-FHN-2037	M20	37	6	30	30
T2-FHN-2445	M24	45	6	36	36
T2-FHN-3058	M30	58	8	45	46
T2-FHN-3668	M36	68	10	54	55

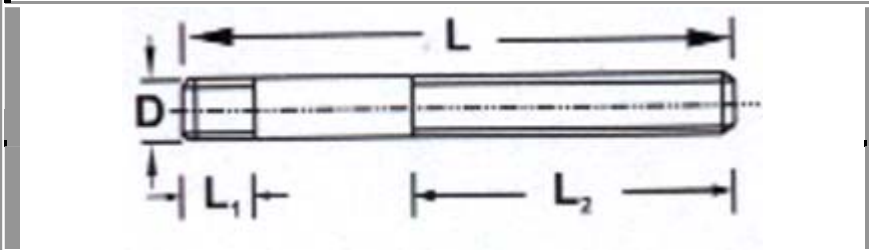
Clamping Stud [Product Type: T2-CS]



Material: Heat-Treated Steel; Blackened.

Applications: Clamping work / Fixtures / Press Tools.

Note: Other sizes are available on request.



Type	ØD X L	L1 (mm)	L2 (mm)	Type	ØD X L	L1 (mm)	L2 (mm)
T2-CS-840	M8 X 40	11	20	T2-CS-16160	M16 X 160	19	100
T2-CS-850	M8 X 50	11	25	T2-CS-16200	M16 X 200	19	25
T2-CS-863	M8 X 63	11	40	T2-CS-16250	M16 X 250	19	160
T2-CS-880	M8 X 80	11	50	T2-CS-2080	M20 X 80	27	32
T2-CS-8100	M8 X 100	11	63	T2-CS-20100	M20 X 100	27	63
T2-CS-1050	M10 X 50	13	25	T2-CS-20125	M20 X 125	27	70
T2-CS-1063	M10 X 63	13	40	T2-CS-20160	M20 X 160	27	100
T2-CS-1080	M10 X 80	13	50	T2-CS-20200	M20 X 200	27	125
T2-CS-10100	M10 X 100	13	63	T2-CS-20250	M20 X 250	27	160
T2-CS-10125	M10 X 125	13	75	T2-CS-20315	M20 X 315	27	190
T2-CS-1250	M12 X 50	15	25	T2-CS-20400	M20 X 400	27	250
T2-CS-1263	M12 X 63	15	32	T2-CS-20500	M20 X 500	27	350
T2-CS-1280	M12 X 80	15	50	T2-CS-24100	M24 X 100	35	45
T2-CS-12100	M12 X 100	15	63	T2-CS-24125	M24 X 125	35	70
T2-CS-12125	M12 X 125	15	75	T2-CS-24160	M24 X 160	35	100
T2-CS-12160	M12 X 160	15	100	T2-CS-24200	M24 X 200	35	125
T2-CS-12200	M12 X 200	15	125	T2-CS-24250	M24 X 250	35	160
T2-CS-1663	M16 X 63	19	32	T2-CS-24315	M24 X 315	35	190
T2-CS-1680	M16 X 80	19	50	T2-CS-24400	M24 X 400	35	250
T2-CS-16100	M16 X 100	19	63	T2-CS-24500	M24 X 500	35	315
T2-CS-16125	M16 X 125	19	75				

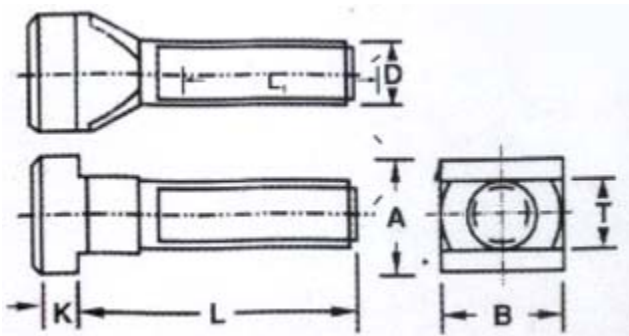
Forged T-Bolt [Product Type: T2-TB]



Material: Heat-Treated Steel; Blackened.

Applications: Clamping work / Fixtures / Press Tools.

Note: Other sizes are available on request.



Type	ØD X T X L	K	L1	A X B
		(mm)	(mm)	(mm)
T2-TB-832	M8 X 8 X 32	6	22	13 X 13
T2-TB-850	M8 X 8 X 50	6	35	13 X 13
T2-TB-865	M8 X 8 X 65	6	35	13 X 13
T2-TB-880	M8 X 8 X 80	6	50	13 X 13
T2-TB-1040	M10 X 10 X 40	6	30	15 X 15
T2-TB-1065	M10 X 10 X 65	6	45	15 X 15
T2-TB-1080	M10 X 10 X 80	6	40	15 X 15
T2-TB-10100	M10 X 10 X 100	6	60	15 X 15
T2-TB-1250	M12 X 12 X 50	7	35	18 X 18
T2-TB-1265	M12 X 12 X 65	7	40	18 X 18
T2-TB-1280	M12 X 12 X 80	7	45	18 X 18
T2-TB-12100	M12 X 12 X 100	7	50	18 X 18
T2-TB-12125	M12 X 12 X 125	7	75	18 X 18
T2-TB-12160	M12 X 12 X 160	7	80	18 X 18
T2-TB-12200	M12 X 12 X 200	7	120	18 X 18
T2-TB-1450	M12 X 14 X 50	8	35	22 X 22
T2-TB-1465	M12 X 14 X 65	8	40	22 X 22
T2-TB-1480	M12 X 14 X 80	8	55	22 X 22
T2-TB-14100	M12 X 14 X 100	8	50	22 X 22
T2-TB-14125	M12 X 14 X 125	8	75	22 X 22
T2-TB-14160	M12 X 14 X 160	8	80	22 X 22
T2-TB-14200	M12 X 14 X 200	8	120	22 X 22
T2-TB-14250	M12 X 14 X 250	8	150	25 X 25
T2-TB-1665	M16 X 16 X 65	9	45	25 X 25
T2-TB-1680	M16 X 16 X 80	9	55	25 X 25
T2-TB-16100	M16 X 16 X 100	9	65	25 X 25
T2-TB-16125	M16 X 16 X 125	9	80	25 X 25
T2-TB-16160	M16 X 16 X 160	9	100	25 X 25
T2-TB-16200	M16 X 16 X 200	9	125	25 X 25
T2-TB-16250	M16 X 16 X 250	9	150	28 X 28

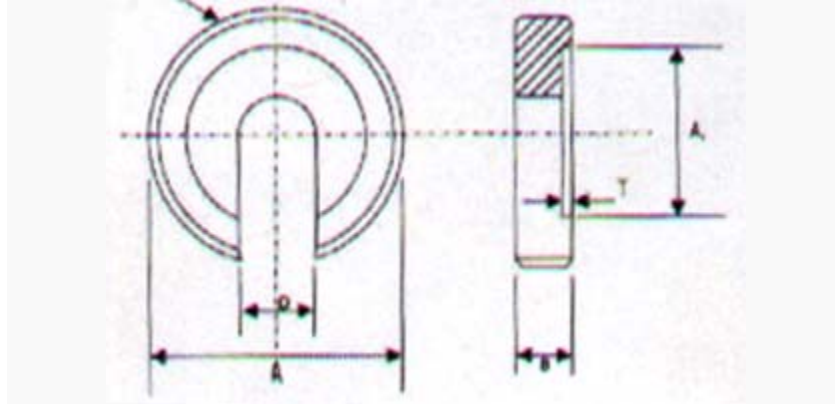
T2-TB-1865	M16 X 18 X 65	10	45	28 X 28
T2-TB-1880	M16 X 18 X 80	10	55	28 X 28
T2-TB-18100	M16 X 18 X 100	10	65	28 X 28
T2-TB-18125	M16 X 18 X 125	10	80	28 X 28
T2-TB-18160	M16 X 18 X 160	10	100	28 X 28
T2-TB-18200	M16 X 18 X 200	10	125	28 X 28
T2-TB-18250	M16 X 18 X 250	10	150	28 X 28
T2-TB-2080	M20 X 20 X 80	12	55	32 X 32
T2-TB-20100	M20 X 20 X 100	12	65	32 X 32
T2-TB-20125	M20 X 20 X 125	12	85	32 X 32
T2-TB-20160	M20 X 20 X 160	12	110	32 X 32
T2-TB-20200	M20 X 20 X 200	12	125	32 X 32
T2-TB-20250	M20 X 20 X 250	12	150	32 X 32
T2-TB-20320	M20 X 20 X 320	12	190	32 X 32
T2-TB-2280	M20 X 22 X 80	14	55	35 X 35
T2-TB-22100	M20 X 22 X 100	14	65	35 X 35
T2-TB-22125	M20 X 22 X 125	14	85	35 X 35
T2-TB-22160	M20 X 22 X 160	14	110	35 X 35
T2-TB-22200	M20 X 22 X 200	14	125	35 X 35
T2-TB-22250	M20 X 22 X 250	14	150	35 X 35
T2-TB-22320	M20 X 22 X 320	14	190	35 X 35
T2-TB-24100	M24 X 24 X 100	16	70	40 X 40
T2-TB-24125	M24 X 24 X 125	16	85	40 X 40
T2-TB-24160	M24 X 24 X 160	16	110	40 X 40
T2-TB-24200	M24 X 24 X 200	16	125	40 X 40
T2-TB-24250	M24 X 24 X 250	16	150	40 X 40
T2-TB-24320	M24 X 24 X 320	16	190	40 X 40
T2-TB-24400	M24 X 24 X 400	16	240	40 X 40
T2-TB-28100	M24 X 28 X 100	18	70	44 X 44
T2-TB-28125	M24 X 28 X 125	18	85	44 X 44
T2-TB-28160	M24 X 28 X 160	18	110	44 X 44
T2-TB-28200	M24 X 28 X 200	18	125	44 X 44
T2-TB-28250	M24 X 28 X 250	18	150	44 X 44
T2-TB-28320	M24 X 28 X 320	18	190	44 X 44
T2-TB-28400	M24 X 28 X 400	18	240	44 X 44

C-Washer [Product Type: T3-CWN]



Material: Low Carbon Steel; Case Hardened to 25-32 HRC; Chemically Blackened.

Applications: Spacer for easy removal / insertion in clamping system.



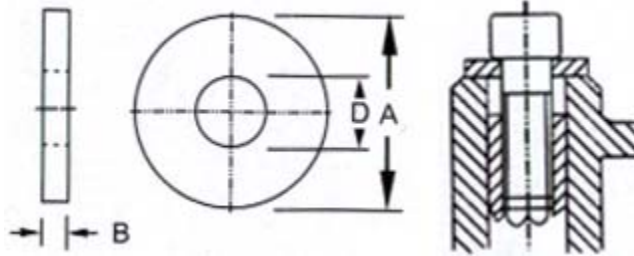
Type	A X D X B (mm)	A1 X T (mm)
T3-CWN-M8	28 X 8.4 X 7	21 X 1
T3-CWN-M10	34 X 10.5 X 8	25 X 1.2
T3-CWN-M12	40 X 13 X 9	30 X 1.8
T3-CWN-M16	56 X 17 X 12	37 X 1.8
T3-CWN-M20	64 X 21 X 14	45 X 2
T3-CWN-M24	75 X 25 X 16	52 X 2

Plain Washer (Thick) DIN 6340 [Product Type: T3-PW-DIN]



Material: Case Hardened to 25-32 HRC; Blackened.

Applications: In designing jigs, fixtures as clamping systems.



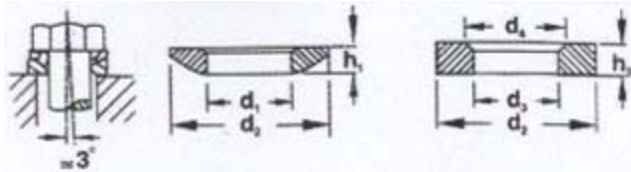
Type	A X D X B
T3-PW-DIN-M 8	23 X 8.4 X 4
T3-PW-DIN-M 10	28 X 10.5 X 4
T3-PW-DIN-M 12	35 X 13 X 5
T3-PW-DIN-M 16	45 X 17 X 6
T3-PW-DIN-M 20	50 X 21 X 6
T3-PW-DIN-M 24	60 X 25 X 8
T3-PW-DIN-M 30	68 X 31 X 10

Spherical Washer with Conical Seat [Product Code: T3-SWCS]



Material: Heat-Treated Steel; Blackened.

Applications: Clamping system element.



Type	Size	D1 (mm)	D2 (mm)	H1 (mm)	D3 (mm)	D4 (mm)	H2 (mm)
T3-SWCS-8	M 8	8.4	17	3.2	10	14.5	3.5
T3-SWCS-10	M 10	10.5	21	4.0	12	18.5	4.2
T3-SWCS-12	M 12	13	24	4.6	15	20	5.0
T3-SWCS-16	M 16	17	30	5.3	19	26	6.2
T3-SWCS-20	M 20	21	36	6.3	24	31	7.5
T3-SWCS-24	M 24	25	44	8.2	28	37	9.5

Supporting Height Plates [Product Type: T3-SHP]

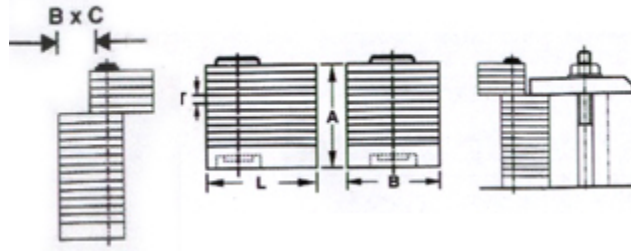


Material: Medium Carbon Steel; Blackened.

Applications: For counter-supporting of clamps. Desired height achievable by side swinging of plate. Beyond range height can be built up by keeping one block above the other.

Note: For higher sizes, base broadened for stability.

B X L X T: Plate Size **B x C:** Clamp Rest Area



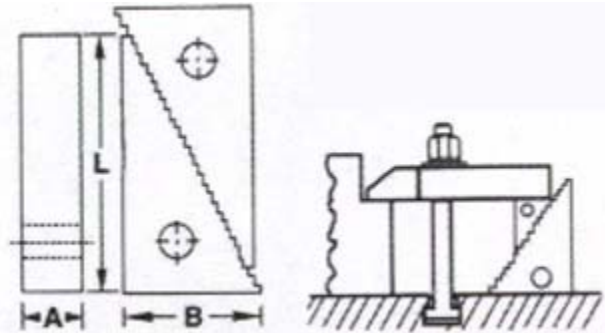
Type	A (mm)	B X L (mm)	B X C (mm)	T (mm)
T3-SHP-425	25	50 X 60	50 X 20	4
T3-SHP-450	50	50 X 60	50 X 20	4
T3-SHP-475	75	50 X 60	50 X 20	4
T3-SHP-4100	100	50 X 75	50 X 35	4
T3-SHP-4125	125	50 X 75	50 X 35	4
T3-SHP-4150	150	50 X 75	50 X 35	4
T3-SHP-4200	200	50 X 75	50 X 35	4
T3-SHP-225	25	35 X 50	35 X 25	2
T3-SHP-250	50	35 X 50	35 X 25	2
T3-SHP-275	75	35 X 50	35 X 25	2
T3-SHP-2100	100	50 X 60	50 X 35	2
T3-SHP-2125	125	50 X 60	50 X 35	2
T3-SHP-2150	150	50 X 60	50 X 35	2
T3-SHP-W275	75	50 X 75	50 X 50	2
T3-SHP-W2100	100	50 X 75	50 X 50	2
T3-SHP-W2125	125	50 X 75	50 X 50	2
T3-SHP-2150	150	50 X 75	50 X 50	2

Universal Serrated Block [Product Type: T3-USB]



Material: Investment Casting/En-8; Heat-Treated; Blackened.

Applications: Supporting block on machines while clamping work-piece.

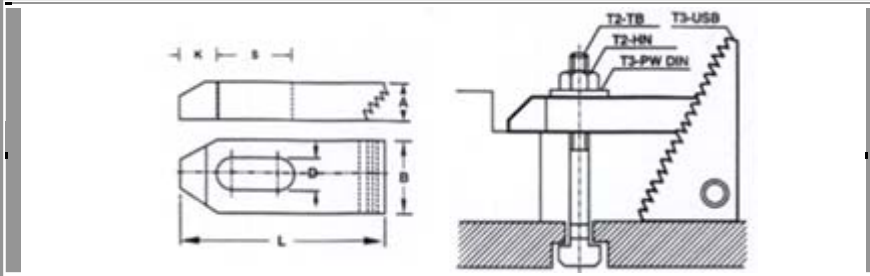


Type	A	B X L	Height Adjustment	
			Minimum	Maximum
T3-USB-001	30	20 X 33	22	50
T3-USB-002	30	36 X 66	40	107
T3-USB-003	30	68 X 131	70	208
T3-USB-004	50	20 X 33	22	50
T3-USB-005	50	36 X 66	40	107
T3-USB-006	50	68 X 131	70	208

Serrated Strap Clamp [Product Type: T1-SSC]

Material: Hardened & Tempered Steel; Chemically Blackened.

Applications: On machines for work holding in combination with universal serrated blocks (Type T3-USB) for instant height adjustment.

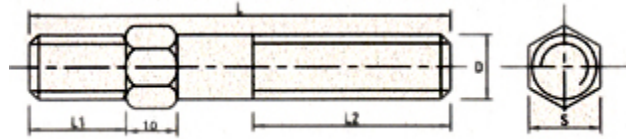


Type	D X L	A	B	K	S	Suitable for Screw Size
	(mm)	(mm)	(mm)	(mm)	(mm)	
T1-SSC-960	9 X 60	12	25	13	22	M8
T1-SSC-1180	11 X 80	15	30	15	30	M10
T1-SSC-14100	14 X 100	20	40	21	40	M12
T1-SSC-14125	14 X 125	20	40	21	50	M12
T1-SSC-18125	18 X 125	25	50	26	45	M16
T1-SSC-18160	18 X 160	25	50	26	65	M16
T1-SSC-22160	22 X 160	30	60	30	60	M20
T1-SSC-22200	22 X 200	30	60	30	80	M20
T1-SSC-26200	26 X 200	30	70	35	80	M24

Clamping Stud with Hex for Spanner Operation [Plastic Moulding Application] [Product Code: T2P-CSX]



Material: C-45/En-9, Heat treated to 8.8 Grade; 24-30 HRC Hardness, Chemically Blackened.



Type	D X L (mm)	L ₁ (mm)	L ₂ (mm)	S (mm)
T2P-CSX-12125	M12 X 125	25	60	13
T2P-CSX-12160	M12 X 160	25	90	13
T2P-CSX-14125	M14 X 125	25	60	15
T2P-CSX-14160	M14 X 160	25	90	15
T2P-CSX-16125	M16 X 125	35	60	17
T2P-CSX-16160	M16 X 160	35	80	17
T2P-CSX-16200	M16 X 200	35	100	17
T2P-CSX-20125	M20 X 125	45	60	22
T2P-CSX-20160	M20 X 160	45	80	22
T2P-CSX-20200	M20 X 200	45	110	22
T2P-CSX-24125	M24 X 125	45	55	28
T2P-CSX-24160	M24 X 160	55	70	28
T2P-CSX-24200	M24 X 200	55	100	28

Clamping Stud with Annular Ring and Spanner Flat Section

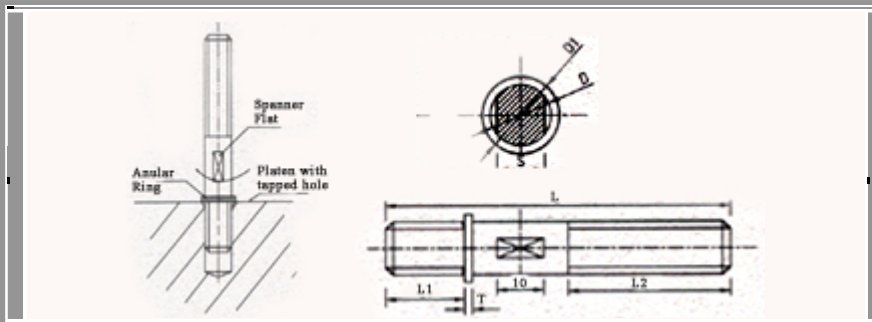
[Plastic Moulding Application]

[Product Codes: T2P-C9FR & T2P-CSFR]



Material for Type T2P-C9FR: AISI-4140/En-19, Heat treated to 10.9 Grade; 32-38 HRC Hardness, Chemically Blackened.

Material for Type T2P-CSFR: C-45/En-9, Heat treated to 8.8 Grade; 24-30 HRC Hardness, Chemically Blackened.



Type: C9FR	Type: CSFR	D X L	L ₁	L ₂	S	D ₁	T
T2P-C9FR-12125	T2P-CSFR-12125	M12 X 125	25	60	10	14	3
T2P-C9FR-12160	T2P-CSFR-12160	M12 X 160	25	90	10	14	3
T2P-C9FR-14125	T2P-CSFR-14125	M14 X 125	25	60	11	18	3
T2P-C9FR-14160	T2P-CSFR-14160	M14 X 160	25	90	11	18	3
T2P-C9FR-16125	T2P-CSFR-16125	M16 X 125	35	60	13	20	4
T2P-C9FR-16160	T2P-CSFR-16160	M16 X 160	35	80	13	20	4
T2P-C9FR-16200	T2P-CSFR-16200	M16 X 200	35	100	13	20	4
T2P-C9FR-20125	T2P-CSFR-20125	M20 X 125	45	60	17	24	5
T2P-C9FR-20160	T2P-CSFR-20160	M20 X 160	45	80	17	24	5
T2P-C9FR-20200	T2P-CSFR-20200	M20 X 200	45	100	17	24	5
T2P-C9FR-24125	T2P-CSFR-24125	M24 X 125	45	55	22	28	6
T2P-C9FR-24160	T2P-CSFR-24160	M24 X 160	55	70	22	28	6
T2P-C9FR-24200	T2P-CSFR-24200	M24 X 200	55	110	22	28	6

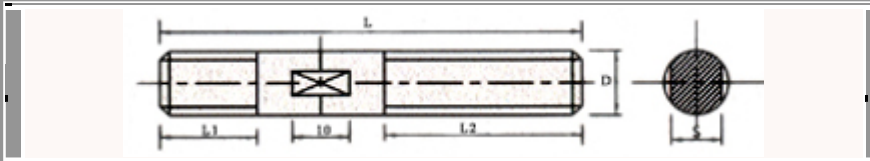
Clamping Stud with Spanner Flat Section [Plastic Moulding Application]

[Product Codes: T2P-C9SF & T2P-CSAF]



Material for Type T2P-C9SF: AISI-4140/En-19, Heat treated to 10.9 Grade; 32-38 HRC Hardness, Chemically Blackened.

Material for Type T2P-CSAF: C-45/En-9, Heat treated to 8.8 Grade; 24-30 HRC Hardness, Chemically Blackened.



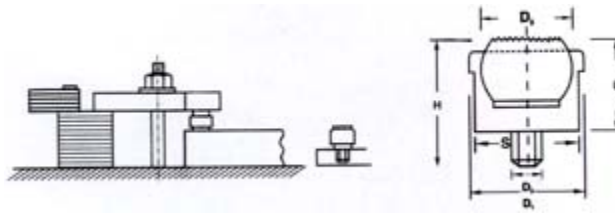
Type: C9SF	Type: CSAF	D X L (mm)	L ₁ (mm)	L ₂ (mm)	S (mm)
T2P-CPSF-12125	T2P-CSAF-12125	M12 X 125	25	60	10
T2P-CPSF-12160	T2P-CSAF-12160	M12 X 160	25	90	10
T2P-CPSF-14125	T2P-CSAF-14125	M14 X 125	25	60	11
T2P-CPSF-14160	T2P-CSAF-14160	M14 X 160	25	90	11
T2P-CPSF-16125	T2P-CSAF-16125	M16 X 125	35	60	13
T2P-CPSF-16160	T2P-CSAF-16160	M16 X 160	35	80	13
T2P-CPSF-16200	T2P-CSAF-16200	M16 X 200	35	100	13
T2P-CPSF-20125	T2P-CSAF-20125	M20 X 125	45	60	17
T2P-CPSF-20160	T2P-CSAF-20160	M20 X 160	45	80	17
T2P-CPSF-20200	T2P-CSAF-20200	M20 X 200	45	100	17
T2P-CPSF-24125	T2P-CSAF-24125	M24 X 125	45	55	22
T2P-CPSF-24160	T2P-CSAF-24160	M24 X 160	55	70	22
T2P-CPSF-24200	T2P-CSAF-24200	M24 X 200	55	110	22

Self-Aligning Ball Element [Product Type: T3-SBE]



Features: The self-aligning serrated ball set into socket adjusts to the plane of the working surface while clamping. This assures of work being clamped properly without straining the system.

Applications: Used for holding rough castings and forged surfaces for machining. Also useful as a clamping element in jigs/fixtures.



Material:	
Ball	Hardened and tempered steel
Body	Toughened steel, blackened

Type	D1	D2	D3	S	L	H
	(mm)	(mm)	(mm)	(mm)	(mm)	(mm)
T3-SBE-8	13	M8	10	11	13	21
T3-SBE-10	20	M10	16	17	18	28
T3-SBE-12	20	M12	16	17	18	30
T3-SBE-16	30	M16	25	27	27	43
T3-SBE-20	50	M20	40	41	35	55

Smooth Sliding Block (For Finer Height Adjustment)

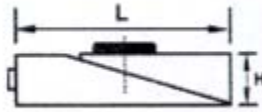
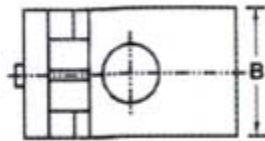
[Product Type: T3-SSB]



Features: Compact and wedge construction assures stepless slide movement for precise clamp setting.

Applications: Recommended for use along with supporting height plates of type: T3-SHP. T3-SHP offers height adjustment in steps of 2mm/4mm and T3-SSB offers stepless height adjustment to precisely desired levels.

Material: Medium carbon steel, top slide hardened & tempered to 24-32 HRC, chemically blackened.



Type	Size (B X H X L) (mm)	Height Variation (mm)	Suitable for Use Along With
T3-SSB-12	35 X 20 X 68	3	225, 250, 275
T3-SSB-22	50 X 25 X 88	5	2100, 2125, 2150
T3-SSB-24	50 X 25 X 88	5	425, 450, 475
T3-SSB-32	50 X 35 X 105	5	W275, W2100, W2150
T3-SSB-34	50 X 35 X 105	5	4100, 4125, 4150